

NCRPC NEWS

A publication of the North Central Regional Planning Commission

May 2019
www.ncrpc.org

High Radon Levels an Issue in Some Homes

What is the second leading cause of lung cancer in the United States?

Radon. Radon is a radioactive gas that occurs naturally in the soil. It cannot be seen, smelled or tasted. Outside, radon is diluted to low concentrations and is not considered harmful. Indoors, however, radon can reach elevated levels that are considered dangerous.



In Kansas, 1 in 4 homes has high levels of radon.

According to the [county map](#) available at the Kansas Radon Program website, much of the NCRPC 12-county region has high average radon values. If your home tests high, it can be fixed. A radon mitigation system should be installed by a certified radon mitigation

contractor. If you already have a radon system in your home, it should be tested every 3 to 5 years to ensure that it is functioning properly.

Testing is the only way to know your level of exposure. You can buy a do-it-yourself radon test kit or hire a professional. NCRPC has a Kansas certified radon measurement technician on staff that can complete this for you. Contact the NCRPC Housing Department at 785-738-2218 for a quote.

If you opt to test yourself, radon test kits can be purchased at many local extension offices or ordered from the National Radon Program at www.sosradon.org. For accurate results, windows should remain closed for the duration of the test.

For more information, visit the Kansas Radon Program website at kansasradonprogram.org/home. ■

Assistance Available for Small Public Water Supply Systems

Small public water supply systems with populations of 150 or less may qualify for loan forgiveness of up to \$500,000. The Kansas Department of Health and Environment (KDHE) Kansas Public Water Supply Loan Fund established the new qualification for loan forgiveness earlier this year.

Knowing the general scope of the project and having an estimated cost is all you need to fill out the [project submittal form](#) to be put on KDHE's Project Priority List. The deadline to submit a form to be considered for

the 2020 Project Priority List is June 17, 2019. Once the project is ranked on the priority list, then cities will have a better idea if they should complete an actual application. Each year the highest ranked projects for the available funds to KDHE will be invited to complete an application.

A preliminary engineering report (PER) is an important part of the application process. Systems without a PER may have difficulty meeting application deadlines. For more information, contact the NCRPC Community Development staff. ■

EXECUTIVE BOARD

Chair:

Scott Moore, City of Ellsworth

Vice Chair:

Ellen Barber, Marshall County
Partnership for Growth

Secretary/Treasurer:

Brian Eilert, First National Bank of Beloit

Executive Board Members:

Karen Brumbaugh, Ottawa County
Craig Chamberlin, Dickinson County
Tom Claussen, Mitchell County
Kelly Larson, Lincoln County
Mark Fleming, Jewell County
Bill Garrison, Cloud County
Heather Hartman, Mitchell County
Community Development
Melissa Rose Hodges, City of Salina
Luke Mahin, Republic County
Economic Development
Raleigh Ordoyne, Washington County
Kermit Rush, Ellsworth County
Hannah Stambaugh, Saline County
David Thurlow, Clay County

ABOUT US

Our Mission

Advancing rural Kansas through comprehensive planning and development services.

Our Vision

By 2024, communities in rural Kansas will favor choices that embrace innovation, increase prosperity and demonstrate resilience.

Contact Us

109 N. Mill, PO Box 565
Beloit, KS 67420 | 785-738-2218
Email: ncrpc@nckcn.com
www.ncrpc.org

[facebook.com/ncrpcbeloit](https://www.facebook.com/ncrpcbeloit)

Board Field Trip Focuses on Innovation, Responsiveness

The invention of keeping mechanical parts held together was created in North Central Kansas 113 years ago. The hitch pin, the locking washer and the bushing were innovatively introduced by Guy Huyett when he created G.L. Huyett Manufacturing in 1906.

Being ready and responsive to basic needs can have great value. Guy Huyett heard and saw a great need for holding wagon and plow parts together and explored ways to make it happen more effectively than ever. Being responsive to needs is something North Central Regional Planning Commission and affiliate NCKCN Co. also strive to be.

On April 25, 2019 the NCRPC Executive Board continued its annual field trip tradition and convened in Minneapolis. Board members met with modern day owners and managers of G.L. Huyett and toured the company facilities. State of the art highly durable fasteners are still made and efficiently sold all over the continent. Little known area discards such as corn husks are used to polish the pin pieces and round pieces of metal. Zinc plating is done to protect the finished products. Broadband Internet is vital to the web portal as



Doug McKinney has been NCRPC Executive Director since 2008.

well as to sales and distribution staff. The workforce continues to grow and even more local and regional benefits are gained through the business' charitable giving. The company is 120 employees strong with many examples of how technical training is significant.

Earlier in the day, board members also enjoyed lunch at the Golden Wheel just south of downtown in Minneapolis. It is next door to the unique Ottawa County Museum and near where Mr. Innovation, George Washington Carver, once resided.

The board also heard from representatives of the North Central Kansas Regional Special Response Team. This highly trained and skilled



The Executive Board field trip on April 25 included a tour of G.L. Huyett in Minneapolis. Board members also heard from the North Central Kansas Regional Special Response Team that day.

tactical law enforcement group are partially supported with Homeland Security equipment and training, as well as Dane G. Hansen Foundation support; however, they are largely supported through cooperation from several counties in the region. They work together to solve crimes and intervene in situations to protect persons and property. Deputy Sheriff Becker and Deputy Sheriff VanCoevern articulated the value in collaboration before, during and after incidents.

Thank you to all who helped make the April field trip to Ottawa County a success. There are many innovative, positive, undertakings in the region. ■

UPCOMING EVENTS AND DEADLINES

Thursday, May 30, 2019

NCRPC Executive Board Meeting
Kansas State Polytechnic, 2 p.m.

Thursday, July 25, 2019

NCRPC Executive Board Meeting
Emergency Services Building, Miltonvale, KS
2 p.m.

FY 2020 CDBG Funding Deadlines

Housing - Aug. 29, 2019
Water and Sewer - Sept. 27, 2019
Community Facilities - Nov. 1, 2019
FY2019 Commercial Rehabilitation &
FY2019 Economic Development -
Open from Jan. 2-Dec. 6, 2019

Kansas Interagency Advisory Committee (KIAC) Meetings

Every 2nd and 4th Tuesday May through July in Topeka. The 2nd Tuesday in August will be in Hays.

Housing Interagency Advisory Committee (HIAC) Meetings

May 15, June 19, July 17 and Nov. 20

Find more on the web »

Events: www.ncrpc.org/news/events
Funding sources and deadlines:
www.ncrpc.org/funding

LMI Survey Clarification

At the FY2020 CDBG application workshop, it was learned that this funding cycle is the last chance to use LMI surveys completed prior to the new Census numbers taking effect on April 1, 2019. Any surveys completed using the 2010 Census numbers are no longer eligible to be used after the FY2020 CDBG funding round (this Fall). This is a correction from what was previously stated in the March 2019 Newsletter. For questions, contact NCRPC Assistant Director Emily Benedick at 785-738-2218. ■

Project Spotlight: Waterville Drainage

The City of Waterville, a town of approximately 680 people located in Marshall County, was awarded Community Development Block Grant (CDBG) funds to make drainage improvements throughout the city. Although drainage systems are often overlooked by residents and visitors to a community, problems occur when these systems fail.

The 2017 award of \$199,788 came from the Kansas Department of Commerce Small Cities CDBG Program in the Community Facilities category. The city provided an equal amount in matching funds through City cash. NCRPC Assistant Director Emily Benedick administered the project.

“Utilizing the CDBG funding, as well as local City cash, Waterville made noticeable improvements to their city’s drainage system throughout town,” Benedick said.

The project consisted of replacing 3,420 linear feet of concrete curb and gutter, installing or replacing 10 inlets, installing 2 manholes, installing a flume grate, 18 linear feet of concrete flume and 10 linear feet of trench drain, and installing 413 linear feet of storm sewer. Also included was the installation of 21 ADA concrete curb ramps and 160 square yards of concrete sidewalk. Additional concrete work included replacement of 215 square yards of driveways connected to the curb & gutter and 1,272 square yards of concrete patching to transition between the new curb and the existing street.

In the planning process, the city’s governing body and staff worked to review areas of need and prioritize those based on their location and impact to citizens and city maintenance programs. Completion of this project addressed the most problematic areas throughout the city’s drainage system.



The recent drainage improvement project in the City of Waterville included this intersection near the historic Waterville Opera House.



Installing or replacing 10 storm inlets were one part of Waterville’s drainage project.

“The most noticeable change by far is cosmetically speaking,” Waterville Mayor Josh Stoudt said. “The curbs and guttering look great. I would definitely recommend this program and hope to utilize it again in the future for Waterville.”

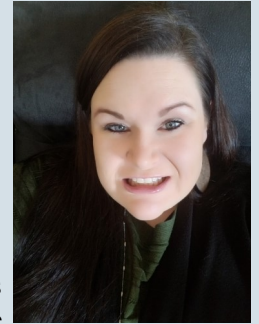
For more information about the CDBG Program, visit www.kansascommerce.gov/cdbg or contact the NCRPC Community Development staff. ■

There are many great things happening in North Central Kansas. The Project Spotlight series features projects around the region to share ways communities have solved challenges.

NEWS BRIEFS

Lacey Miller Joins Staff

The NCRPC is pleased to announce the recent hiring of Lacey Miller as Regional Public Health Preparedness Coordinator and Homeland Security Program Assistant.



Lacey Miller

In this role she will provide support services in public health emergency preparedness and response planning for 13 county health departments that make up the North Central Kansas Public Health Initiative (NCKPHI). Miller will also provide support to Regional Homeland Security Councils as fiscal agent. She is currently training with long-time NCRPC employee Sherry Angell, who will be retiring this summer.

Lacey is a registered nurse and joins the organization with nearly 20 years of experience at Mitchell County Hospital Health Systems.

Has Your Community Completed a HAT?

The last day for communities to have a Housing Interagency Advisory Committee (HIAC) meeting before submitting a CDBG Housing application this year is July 17. To be considered for a HIAC meeting, a community must first complete a Housing Assessment Tool (HAT) and submit a profile two weeks prior to the HIAC meeting date. For questions, contact the NCRPC Housing staff.



North Central
Regional Planning Commission

109 N. Mill ■ PO Box 565
Beloit, KS 67420 ■ www.ncrpc.org

Ophthalmologist Expands Practice to New Salina Location

After renting office space for several years to see patients in Salina, Dr. V. Esther Rettig, M.D., P.A., has purchased a permanent Salina location.

Dr. Rettig is a Mayo Certified Ophthalmologist/Surgeon offering medical eye care, surgical eye care, and cosmetic care. She began practice in May 1998 in McPherson. This practice continues. Rettig has also seen patients in Salina since 2014, but at a space she rented from ophthalmologist Dr. Weiner one day per month. Dr. Rettig routinely partners with optometrists in North Central Kansas to assist their patients with various eye surgeries.

Dr. Rettig's new Salina location at 2525 S. Ohio Street has 11,800 square foot and was formerly home to Brown Mackie College. In addition to the space utilized by the practice, office

space is occupied by Pickel & Bruckner CPA and another 3,000 square feet is available to rent.

The project to purchase the Salina office location was made possible with investment by the owner as well as funding from First Bank Kansas, NCKCN-Four Rivers Business Down Payment Assistance Program, and the NCRPC-Revolving Loan Fund. It is anticipated that four full-time jobs will be created within the next year.

For more information about the financing programs used, contact



Courtesy Photo

Dr. Esther Rettig, M.D., P.A. expanded to a new permanent location in Salina at 2525 S. Ohio Street in November 2018.

NCRPC Business Finance Director Debra Peters at 785-738-2218 or dpeters@nckcn.com or visit www.ncrpc.org/services/business.

To contact Dr. V. Esther Rettig, M.D., P.A. at its Salina location, call 785-371-2425 or find the business on Facebook. ■